

## HELPFUL ORGANIZATIONS AND RESOURCES

Here is a guide to important resources and organizations for Norwegian genealogists.

### Norwegian-American Genealogical Center and Naeseth Library

For anyone who needs assistance with their search, the Norwegian-American Genealogical Center and Naeseth Library ([www.nagcnl.org](http://www.nagcnl.org)) in Madison, Wisconsin is an excellent option. They are professionals and charge for their services. They also have a library that is available to the public for a fee.

Among its services, the center will:

- Search library and archival collections
- Help solve genealogical problems
- Compile bibliographies and other aids
- Collect family histories
- Assemble transcripts of cemeteries, census and church records

The Naeseth library offers all the essential sources for the Norwegian-American genealogist. Their collection includes Norwegian parish records (dating from the 17<sup>th</sup> century to the 20<sup>th</sup> century) that provide information about baptisms, confirmations, marriages, burials, and emigration, as well as bygdebøker (local community histories), privately published family histories and Norwegian census records. The Naeseth Library also offers American sources, like cemetery records and obituary files, some North American port records and American Lutheran church records.

Norwegian-American Genealogical Center & Naeseth Library  
415 West Main St.  
Madison, WI 53703  
Tel. (608) 255-2224  
Fax (608) 255-6842  
[www.nagcnl.org](http://www.nagcnl.org)

### University of North Dakota Library Family History and Genealogy Room

The University of North Dakota (UND) Library Family History and Genealogy Room offers a wealth of primary and secondary source material essential to any Norwegian genealogist. The star attraction of their archives is their collection of more than 1000 bygdebøker for 520 communities in Norway, which may be the largest single collection of the books anywhere. The Family History and Genealogy room is available to the general public, but the bygdebøker themselves are non-circulating. Anyone over the age of 18 who is not affiliated with the University may obtain a library card for an annual fee.

The Genealogy Room has its own website, through which one can browse for bygdebøker by county. It is important to note these lists are arranged according to the English alphabet, rather than the Norwegian. For example, Østfold county is listed directly after Oppland, rather than at the end of the list where it would otherwise be. Similarly, the letters "å" and "æ" are both alphabetized as the English letter "a." It is frequently more helpful to use the online card catalog, "ODIN", which features a simple search interface, and supports the use of the Norwegian vowel characters.

The University also publishes a bound list of all bygdebøker which you can obtain by contacting the library. Besides the bygdebøker, the UND library also offers a number of other locally-oriented resources that may well be of use. They include; Federal Manuscript Population Census Schedules from 1840 to 1920, Ontario and Manitoba Provincial Population Census Schedules from 1831 to 1891, North Dakota and Western Minnesota Land Tract Books, the Ontario Computerized Land Record Index, American Lutheran Church Records for North Dakota, and naturalization records for several Red River Valley counties.

Chester Fritz Library  
University Ave. & Centennial Dr.  
P.O. Box 9000  
Grand Forks, ND 58202  
Tel. (701) 777-2617  
<http://www.library.und.edu>

### Norwegian American Historical Association

The Norwegian American Historical Association at St. Olaf College in Northfield, Minnesota also offers an extensive collection of interesting material. While their focus is mostly historical, they have a wealth of information that would be of use to any Norwegian genealogist.

The NAHA collection includes a great deal of academic material (articles from academic journals, studies, theses, etc.), which can also be useful for genealogists seeking to understand the social and political environments their ancestors inhabited. The collection also features a collection of manuscripts written by Norwegian immigrants and Norwegian-Americans. The manuscripts range in subject from letters to personal memoirs to commentary on religious, political and social issues.

Using NAHA is an excellent way to broaden your research. The NAHA archive contains books, letters, journals, diaries, family histories and

*(Continued on page 22)*

photographs that document and illuminates the “big picture” of Norwegian-American life. They also contain emigration records from major Norwegian ports from 1867 to about 1900.

If you plan on using the archives more than once, joining NAHA is an excellent idea. NAHA members receive the following benefits:

- Complimentary copy of all new publications
- 25% discount on NAHA publications currently in print
- Priority use of the archives, in person and by e-mail
- The NAHA newsletter
- Invitations to participate in educational activities

The NAHA archives are always expanding, and most material can be searched for online via a dedicated search engine called Leif, available through the NAHA website. With Leif you can perform a document search (which looks at the titles for individual documents within the collection) or a collection search (which looks through the descriptions of articles). A document search is best if you are looking for a specific letter or article by a particular person, while a collection search is best if you are looking for the writings on broad topics. The interface is very easy to use, and includes a way to add Norwegian vowels (ø, å, æ) which have to be used in order to turn up results for a search like, for example, “ættesaaga.”

Also online you will find a PDF document which includes complete bibliographical information for every item in the archive. The file is rather large (566k, 244 pages) but if you save it to your hard drive, you can search it in Adobe Acrobat Reader by using the find function (Control + F). Visitors may use the NAHA library for a daily fee. There is a discounted rate for members. If you cannot visit the library in person, NAHA does have a small staff that will assist with research at an hourly rate. The rate varies depending on the type of research needed. NAHA members receive priority, and it is necessary to schedule an appointment ahead of time. The staff will also scan or photocopy most materials from the collection, unless their condition makes duplicating them impossible. NAHA does not provide translation services, but will provide information about translators upon request.

The Norwegian-American Historical Association  
1510 St. Olaf Avenue  
Northfield, MN 55057-1097  
(507) 786-3221  
<http://www.naha.stolaf.edu>  
[naha@stolaf.edu](mailto:naha@stolaf.edu)

### Norwegian-American Bygdelagenes Fellesraad

Another important organization to know about is the Bygdelagenes Fellesraad and the various *bygdelag* it represents. A *bygdelag* is a club (*lag*) for people whose ancestors all came from the same community (*bygd*) in Norway. There are currently 32 *lag* in America with members across the country, loosely coordinated by the Fellesraad (central council). The *lag* often attract people who are interested in genealogy and history, so if you need guidance specific to your area of Norway, the right *bygdelag* may have just the person to talk to. For complete contact for all the *bygdelagene*, go to [www.fellesraad.com](http://www.fellesraad.com).

### Norwegian-American Genealogical Association

Practicing Norwegian-American genealogists, professionals and amateurs alike, may want to consider joining the Norwegian-American Genealogical Association (NAGA). NAGA assists members with their research, and maintains a private collection of research materials. These include Norwegian census records, regional maps of Norway, ships' lists, and a collection of other books and periodicals. NAGA holds monthly meetings in South St. Paul, Minnesota, and welcomes members from all over the world. The group also publishes a quarterly newspaper, *Avisen*, which explores research methods, and reviews the latest genealogical resources.

Norwegian-American Genealogical Association  
c/o Minnesota Genealogical Library  
1185 Concord St., Suite 218  
South St. Paul, MN 55075-1150  
<http://www.norwegianamerican.org>

Meetings are held the last Wednesday of every month, at 7:00 PM.

### The Church of Jesus Christ of Latter-day Saints

The Church of Jesus Christ of Latter-day Saints – the Mormon Church – offers several extensive genealogy resources. Most of these are integrated through their flagship website, [www.familysearch.org](http://www.familysearch.org). In addition to millions of birth records, the Church also offers research assistance through genealogy centers around the world and a phone line. Membership is not required to use their services.

(Continued on page 23)

## ONLINE RESOURCES

Here are a few online resources that may be useful. Not all of these are specific to Norway, and some of them may charge for their services, so be sure to review their terms of service carefully before using them.

### **Ancestry.com**

The largest collection of family history records on the web.

<http://www.ancestry.com>

### **Archives.com**

Genealogy links worldwide

[www.archives.com](http://www.archives.com)

### **Ellis Island Immigrant Museum**

Passenger searches, family scrapbooks and information on the immigrant experience.

[www.libertyellisfoundation.org](http://www.libertyellisfoundation.org)

### **Evangelical Lutheran Church in America**

The Archives of the Evangelical Lutheran Church in America are the collective memory of the ELCA church-wide organization, including records of predecessor church bodies, inter-Lutheran organizations, and certain records relating to ELCA synods and their predecessors.

<http://www.elca.org/archives>

### **Family Search**

The Family History Library Catalog describes more than 3 million microfilms, microfiche, books, and other items available at the Family History Library and through your local family history center.

<http://www.familysearch.org>

### **Kirken.no**

This is the homepage of the Norwegian state church. Through this page you can search for contact information of parishes in Norway, who may have useful archives.

[www.kirken.no](http://www.kirken.no)

### **Norwegian Historical Data Centre**

The Norwegian Historical Data Centre (NHDC) is a national institution under the Faculty of Social Science at the University of Tromsø. Their main aim is to computerize the Norwegian censuses 1865 onwards together with the parish registers and other sources from the 18th and 19th centuries.

<http://www.rhd.uit.no/indexeng.html>

### **Digitalarkivet**

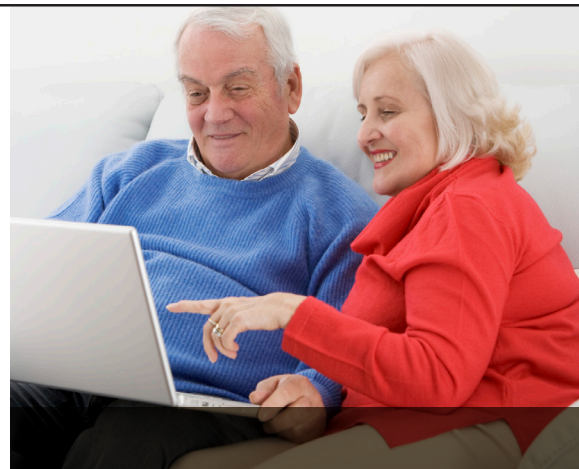
Internet source of Norway church and public documents. Search and browse options can lead the researcher to birth/baptism; confirmation; marriage; death and burial; church and public migration and travel records; Norwegian census; taxes paid and more.

<http://arkivverket.no/eng/using-the-archives/genealogical-research>

### **Norwegian Genealogy Facebook Page**

This is similar to Norway List service. Only the format is different. Many of the same volunteers in Norway List now also are members of the Norwegian Genealogy Facebook Page. The primary difference is that it is much easier to share documents on Facebook.

This is a closed group. One must first be a Facebook subscriber, a free service. Then, you go to this WEB site on Facebook and request to be a member. All people who request to be a member and are researching Norwegian genealogy will be accepted. Membership is free. <https://www.facebook.com/groups/NorwegianGenealogy/>



## RESEARCH IN NORWAY

Once you are firmly established in your research you may find it necessary to start looking for sources on the other side of the Atlantic.

### The Norwegian Emigration Center

The Norwegian Emigration Center in Stavanger, Norway is the best place to start research in Norway. The Center's extensive archives contain church records on microfilm, census information and bygdebøker. The Center also offers a number of services, including:

- Help finding relatives anywhere in Norway
- Tips for finding sources on the Internet

Online or written requests only. You can also hire the staff genealogist to do the work for you. You can fill out an inquiry form online, stating as much information as you know about your background and any specific questions that you have. The cost is \$70 for the first three hours of research, and \$30 for each additional hour. Due to the large number of requests, the average wait time for a reply is about 3 months.

Norwegian Emigration Center  
Kulturbanken  
Domkirkeplassen 3  
4005 Stavanger, Norway  
011 47 908 31 097  
<http://www.emigrationcenter.com/>

### Statsarkivene and Riksarkivet

Another excellent resource in Norway are Riksarkivet and Statsarkivene. Riksarkivet (The National Archive) preserves historical government documents of national interest, while the Statsarkivene, which are divided up into local branches, contain materials specific to the areas they serve. Both the Riksarkivet and the Statsarkivene contain only materials that are at least 25 years old and out of administrative use. The central web page ([www.riksarkivet.no](http://www.riksarkivet.no)) and the local pages (see links below) all have some basic information in English, but most of the actual content of their pages is in Norwegian. These National Archives will provide you with copies of birth, death, baptismal, or marriage records, depending on what is available in their archives. Although they will not do regular research, they will send you copies of their microfilm records if they find information about a specific person. To be able to do this they will need names, birth dates, and/or other vital dates, and the names of the places your ancestors came from. Fees will vary by branch and type of research.

#### **If your ancestors came from Østfold, Akershus, Oslo, Buskerud, Vestfold or Telemark, contact:**

Statsarkivet i Oslo  
Sognsveien 221  
Postboks 4015, Ullevål stadion  
0806 Oslo, Norway  
Tel. 011 47 22 02 26 00  
Fax 011 47 22 23 74 89  
[statsarkivet.oslo@arkivverket.no](mailto:statsarkivet.oslo@arkivverket.no)  
<http://www.arkivverket.no/oslo>

#### **If your ancestors came from Hedmark and Oppland, contact:**

Statsarkivet i Hamar  
Lille Strandgate 3, 3rd floor  
2317 Hamar, Norway  
Tel. 011 47 62 55 54 40  
Fax 011 47 62 52 94 48  
[sahamar@arkivverket.no](mailto:sahamar@arkivverket.no)  
<http://www.arkivverket.no/hamar>

#### **If your ancestors came from Buskerud, Vestfold or Telemark, contact:**

Statsarkivet i Kongsberg  
Frogsvei 44  
3611 Kongsberg, Norway  
Tel. 011 47 32 86 99 00  
Fax 011 47 32 86 99 10  
[sakongsberg@arkivverket.no](mailto:sakongsberg@arkivverket.no)  
<http://www.arkivverket.no/kongsberg>

(Continued on page 25)

**If your ancestors came from Aust-Agder or Vest-Agder, contact:**

Statsarkivet i Kristiansand  
Märthasvei 1  
4633 Kristiansand, Norway  
Tel. 011 47 38 14 55 00  
Fax 011 47 38 14 55 01  
[statsarkivet.kristiansand@arkivverket.no](mailto:statsarkivet.kristiansand@arkivverket.no)  
<http://www.arkivverket.no/kristiansand>

**If your ancestors came from Rogaland, contact:**

Statsarkivet i Stavanger  
Bergelandsgata 30  
4012 Stavanger, Norway  
Tel. 011 47 51 50 12 60  
Fax 011 47 51 50 12 90  
[sastavanger@arkivverket.no](mailto:sastavanger@arkivverket.no)  
<http://www.arkivverket.no/stavanger/>

**If your ancestors came from Hordaland or Sogn og Fjordane, contact:**

Statsarkivet i Bergen  
Årstadveien 22  
5009 Bergen, Norway  
Tel. 011 47 55 96 58 00  
Fax 011 47 55 96 58 01  
[sabergen@arkivverket.no](mailto:sabergen@arkivverket.no)  
<http://www.arkivverket.no/bergen>

**If your ancestors came from Møre og Romsdal, Sør-Trøndelag, Nord-Trøndelag and Nordland, contact:**

Statsarkivet i Trondheim  
Maskinistgata 1  
7042 Trondheim, Norway  
Tel. 011 47 73 88 45 00  
Fax 011 47 73 88 45 40  
[satrandheim@arkivverket.no](mailto:satrandheim@arkivverket.no)  
<http://www.arkivverket.no/trondheim>

**If your ancestors came from Troms og Finnmark, contact:**

Statsarkivet i Tromsø  
Postboks 6315  
Huginbakken 18, Breivika  
9293 Tromsø, Norway  
Tel. 011 47 77 64 72 00  
Fax 011 47 77 64 72 01  
[satrandheim@arkivverket.no](mailto:satrandheim@arkivverket.no)  
<http://www.arkivverket.no/tromso>

**Norsk Utvandrermuseum –  
The Norwegian Emigrant Museum**

The Norwegian Emigrant Museum in Ottestad, Norway is an independent museum commemorating the emigration of the Norwegian people. The museum features an extensive open air display of emigrant cabins, barns and artifacts. The museum also maintains a research center and library including:

- Thousands of letters from America
- Thousands of emigrant photographs
- An emigrant agent archive
- Archives from Norwegian missionary activity
- Hundreds of tape recorded interviews with emigrants
- Microfilms of church records from Norwegian congregations in America
- American census information

Norsk Utvandrermuseum  
Åkershagan  
Ingrid Semmingsensvei 10  
2312 Ottestad, Norway  
Tel. 011 47 62 57 48 50  
Fax 011 47 62 57 48 51  
[admin@emigrantmuseum.no](mailto:admin@emigrantmuseum.no)  
<http://www.emigrantmuseum.no/>